


BUTCHERY

Beef	33-34	Duck/Geese	38
Lamb	35	Bacon & Gammon	39
Pork	36	Offal & Specialist Meats	40
Chicken	37	Mixed Grill	41
Turkey	38		

SYMBOL QUICK KEY

-  Special Order Only.
- ✓ Split available.
- GF Gluten Free.

Freshly Prepared Meat

Fresh Meat is a product group where you cannot compromise on quality, at Turner Price Foodservice we only use the best top quality meat. You will never be disappointed with the quality, tenderness and taste of our products, with full traceability back to its origin. We butcher all the traditional meats and our onsite butchers are happy to cut and prepare meat to your exact requirements.



"The one to beat for Quality Meat"
Prepared and Delivered by Turner Price Foodservice

BUTCHERY

BEEF

Case size Unit Split

FRESH (CHILLED)

SELECTED CUTS

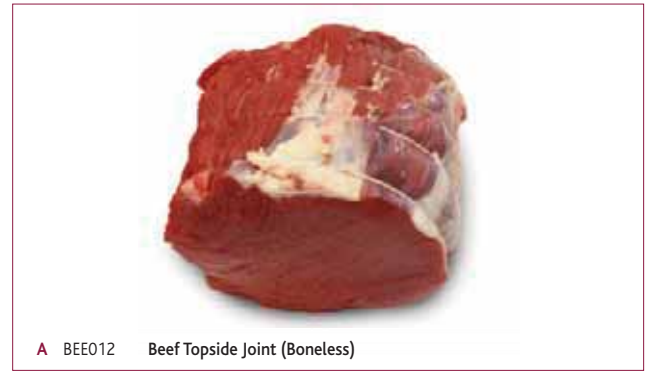
	BEE040	Beef Fore Rib Carvery Cut	500	1	Per Kg
	BEE042	Beef Fore Rib (Boneless)	500	1	Per Kg
	BEE038	Beef Fore Rib (Bone In)	500	1	Per Kg
	BEE010	Beef Topside (Whole/Boneless)		1	Per Kg
A	BEE012	Beef Topside Joint (Boneless)		1	Per Kg
	BEE028	Beef Sirloin (Bone In)	500	1	Per Kg
	BEE014	Beef Silverside (Whole/Boneless)		1	Per Kg
G	BEE016	Beef Silverside Joint (Boneless)		1	Per Kg
H	BEE050	Beef Brisket (Boneless)		1	Per Kg
	BEE008	Top Rump (Knuckle) Joint 1-7kg		1	Per Kg
B	BEE013	Beef Corner Topside Joint B/Less UK		1	Per Kg
	BEE020	Beef Silverside Daubes UK		1	Per Kg
	BEE023	Feather Blade	500	1	Per Kg
	BEE004	Top Rump Whole		1	Per Kg
	BEE132	Beef Silverside Flats 5Kg	500	1	Per Kg
	BEE017	Salmon Cut Silverside Joint		1	Per Kg

FILLET

	BEE032	Beef Fillets UK (Whole) 3-4kg		1	Per Kg
C	BEP050	Fillet Steaks UK (Weighted)		1	Per Kg
	BEE033	Fillets Tails		1	Per Kg
D	BEE034	Beef Fillets Whole (UK/Chainoff)		1	Per Kg
	BEP038	Fillet Steak 6oz/170g		1	Each
	BEP047	Fillet Steak 8oz/227g		1	Each
	BEP046	Fillet Steak 10oz/283g		1	Each
	BEP044	Fillet Steak 12oz/340g		1	Each
	BEE001	Brazil Beef Fillet (Ex Cham) Per Kg	500	1	Per Kg
	BEE049	Chateaubriand		1	Per Kg

STRIPLOIN

E	BEE030	Beef Striploin UK (S/trim Whole)		1	Per Kg
	BEE026	Beef Striploin (Whole) 8-10kg Std.		1	Per Kg
	BEP019	Sirloin Steaks UK (Weighted)		1	Per Kg
	BEP051	Sirloin Steak UK 5x4oz/113g		1	Pack
F	BEP052	Sirloin Steak UK 5x8oz/227g		1	Pack
	BEP057	Sirloin Steak UK 5x10oz/283g		1	Pack
	BEP053	Sirloin Steak UK 5x12oz/340g		1	Pack
	BEE500	Imported Striploin Whole	500	1	Per Kg
	BEE031	Beef Striploin Whole DB UK/Irish	500	1	Per Kg



A BEE012 Beef Topside Joint (Boneless)



B BEE013 Beef Corner Topside Joint B/Less UK



C BEP050 Fillet Steaks UK **D** BEE034 Beef Fillets Whole



E BEE030 Beef Striploin UK (S/trim Whole)



G BEE016 Beef Silverside Joint (Boneless)



H BEE050 Beef Brisket (Boneless)



F BEP052 Sirloin Steak UK 5x8oz/227g

BUTCHERY

Case size Unit Split

FRESH (CHILLED)

RUMP

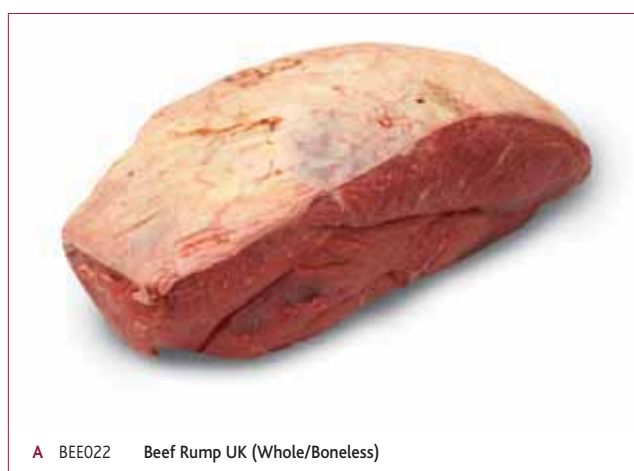
A	BEE022	Beef Rump UK (Whole/Boneless)	1	Per Kg
	BEP001	Rump Steaks UK (Weighted)	1	Per Kg
	BEP054	Rump Steaks UK 5x4oz/113g	1	Pack
	BEP055	Rump Steaks UK 5x8oz/227g	1	Pack
	BEP058	Rump Steaks UK 5x10oz/283g	1	Pack
	BEP056	Rump Steaks UK 5x12oz/340g	1	Pack
B	BEP059	Rump Steaks 5x6oz/170g UK	1	Pack
	BEP012	Rump Steak 16oz/454g	1	Each
	BEP010	Rump Steak 24oz/680g	1	Each

RIB EYE

	BEE044	Beef Rib Eye Roll (Boneless)	1	Per Kg
C	BEE048	Beef Rib Eye Steaks 8oz/227g	1	Each
	BEE049	Beef Rib Eye Steaks 10oz/283g	1	Each
	BEE084	Imported Rib Eye Roll	1	Per Kg
	BEP016	Rib Eye Steak 12oz/340g	1	Each

DICED/MINCED AND OTHER

	BEE018	Beef Strips (Topside)	1	Per Kg
D	BEE054	Beef Silverside Braising Steak	1	Per Kg
	BEE056	Beef Chuck Braising Steak	1	Per Kg
	BEE062	Beef Chuck Roll	1	Per Kg
	BEE068	Beef Chuck Steak & Kidney	1	Per Kg
E	BEE072	Beef Mince 1st Quality	1	Per Kg
	BEE060	Beef No1 (Diced)	1	Per Kg
	BEE070	Beef Mince Steak	1	Per Kg
	BEE003	Beef Heel Steak	1	Per Kg
	BEE029	Beef Olives UK	1	Per Kg
	BEE073	Mince Beef (1kg Pack Frozen) 85% VL	1	Pack
	BEE200	Chuck Tenders	1	Per Kg
	BEE007	No.2 Diced Beef	1	Per Kg
	BEE150	Jacobs Ladder	1	Per Kg
	BEE025	Whole Fore Quarter Beef (Bone In)	1	Per Kg
	BEP032	T Bone Steaks (Frozen)	1	Per Kg
	BEP045	T Bone Steak 16oz/454g (Frozen)	1	Each
	BEP035	T Bone Steak 14oz/397g (Frozen)	1	Each

**B** BEP059 Rump Steaks 5x6oz UK**C** BEE048 Beef Rib Eye Steaks 8oz**D** BEE054 Beef Silverside Braising Steak**A** BEE022 Beef Rump UK (Whole/Boneless)**E** BEE072 Beef Mince 1st Quality

BUTCHERY

LAMB

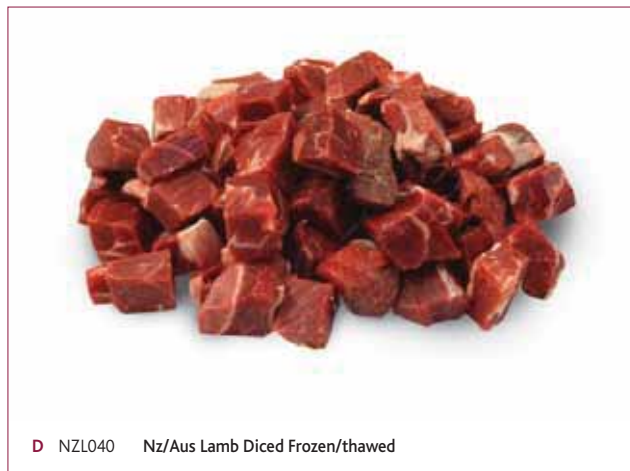
		Case size	Unit	Split
FROZEN/THAWED				
LEG				
	NZL008	Imp Lamb Leg (Boneless) Thawed	1	Per Kg
	NZL009	Imp Lamb Leg (Boneless) Frozen	1	Per Kg
	NZL006	Nz/Aus Mutton Leg (Boneless) Frozen	1	Per Kg
	NZL022	Nz/Aus Lamb Leg (Bone In)	1	Per Kg
	NZL010	Nz/Aus Lamb Leg Steak (Boneless)	1	Per Kg
A	NZL011	UK Lamb Leg Boneless 2.5 Kg	SOO	1 Per Kg
	NZL012	UK Lamb Leg Boneless Frozen	SOO	1 Per Kg
B	NZL013	UK Lamb Leg Steak Boneless (Thawed)	SOO	1 Per Kg
RACKS AND SHANKS				
	NZL005	Lamb Racks Frozen	1	Per Kg
	NZL053	Lamb Rack 7 Rib French Trim	1	Per Kg
	NZL054	Lamb Rack French Trim 4 Rib	1	Per Kg
C	NZL024	Nz/Aus Lamb Shanks	1	Per Kg
	NZL025	Nz/Aus Lamb Shanks EACH (14-16oz approx)	1	Each
	NZL055	UK Lamb Rack 7 Rib French Trim	SOO	1 Per Kg
	NZL026	Nz/Aus Lamb Shanks 12-14 oz	1	Each
LOIN				
	NZL050	Nz/Aus Lamb Loin 1 Rib (Bone In)	1	Per Kg
	NZL080	Nz/Aus Lamb Loin Eye	SOO	1 Per Kg
SHOULDER				
	NZL032	Nz/Aus Lamb Shoulder (Boneless)	1	Per Kg
	NZL030	Nz Lamb Henry's (Shoulder Joints)	1	Per Kg
	NZL031	Nz/Aus Lamb Shoulder Bone In	1	Per Kg
	NZL033	Nz/Aus Lamb Shoulder Whole (Oyster)	1	Per Kg
	NZL034	UK Lamb Shoulder Boneless (B/R)	1	Per Kg
CHOPS AND OTHER				
	NZL056	Nz/Aus Lamb Chops Frozen Bandsaw	1	Per Kg
	NZL058	Nz/Aus Lamb Chops Barnsley Frozen	1	Per Kg
	NZL060	Nz/Aus Lamb Noisettes Thawed	SOO	1 Per Kg
	NZL001	Nz/Aus Lamb Rumps (Boneless) Frozen	1	Per Kg
	NZL070	UK Barnsley Chop	1	Per Kg
DICED AND MINCED				
D	NZL040	Nz/Aus Lamb Diced Frozen/thawed	1	Per Kg
E	NZL042	Nz/Aus Lamb Minced Frozen/thawed	1	Per Kg



B NZL013 UK Lamb Leg Steak Boneless (Thawed)



C NZL024 Nz/Aus Lamb Shanks



D NZL040 Nz/Aus Lamb Diced Frozen/thawed



A NZL011 UK Lamb Leg Boneless 2.5 Kg



E NZL042 Nz/Aus Lamb Minced Frozen/thawed

BUTCHERY

PORK

Case
size Unit Split

FRESH & FROZEN

WHOLE

PRC045	Pork Whole Pig For Roasting	SOO	1	Per Kg
PRC046	Suckling Pig Whole	SOO	1	Each
PRC048	Pork Half Pig For Roasting		1	Per Kg
PRC049	Pork Head Whole	SOO	1	Each

LEG

A	PRC006	Pork Leg (Boneless/Chilled)	1	Per Kg
	PRC010	Pork Leg Strips (Boneless/Chilled)	1	Per Kg
	PRC007	Pork Leg Joint Log Style Chilled	1	Per Kg
	PRC008	Pork Leg Joint Chilled (Boneless)	1	Per Kg
	PRC004	Pork Leg (Bone in/Whole) Chilled	1	Per Kg

LOIN

	PRC005	Pork Loin Whole UK R/Less B/Less	SOO	1	Per Kg
B	PRC016	Pork Loin (Rind On/Boneless)		1	Per Kg
C	PRC014	Pork Loin (Rindless/Boneless)		1	Per Kg
	PRC012	Pork Loin (Bone In/Chilled)		1	Per Kg
	PRC015	Pork Loin Rind On Boneless Joint		1	Per Kg
	PRC017	Pork Loin Rindless Boneless Joint		1	Per Kg
D	PRC022	Pork Loin Steaks (Rindless)		1	Per Kg

SHOULDER

	PRC024	Pork Shoulder (Bone In)		1	Per Kg
E	PRC026	Pork Shoulder (Boneless)		1	Per Kg

BELLY

	PRC038	Pork Belly Whole (Chilled)		1	Per Kg
	PRC042	Pork Belly Spare Rib Meaty		1	Per Kg
F	PRC040	Pork Belly Sliced		1	Per Kg
	PRF016	Pork Belly (Frozen)		1	Per Kg
	PRF018	Pork Belly Meaty Ribs (Frozen)		1	Per Kg
	PRC041	Pork Belly Square 8oz/227g		1	Each

DICED/MINCED

	PRC032	Pork Diced Chilled		1	Per Kg
	PRC030	Pork Mince Chilled		1	Per Kg

FROZEN

LEG

	PRF004	Pork Leg (Boneless/Frozen)		1	Per Kg
--	--------	----------------------------	--	---	--------

LOIN

	PRF006	Pork Loin (Bone In/Frozen)		1	Per Kg
G	PRC020	Pork Loin Chops Bandsaw (Frozen)		1	Per Kg
	PRF020	Pork Loin Ribs (Baby Back/Frozen)		1	Per Kg

OTHER

	PRF012	Pork Tenderloin Fillet (Frozen)		1	Per Kg
	PRF030	Pork Plums Frozen Per Kg	SOO	1	Per Kg
	PRC054	Smokey BBQ Pork Rib Eye Steak	SOO	1	10
	PRF010	Pork Neck Boneless Frozen	SOO	1	Per Kg



A PRC006 Pork Leg (Boneless/Chilled)



B PRC016 Pork Loin (Rind On/Boneless)



C PRC014 Pork Loin (Rindless/Boneless)



D PRC022 Pork Loin Steaks (Rindless)



E PRC026 Pork Shoulder (Boneless)





F PRC040 Pork Belly Sliced






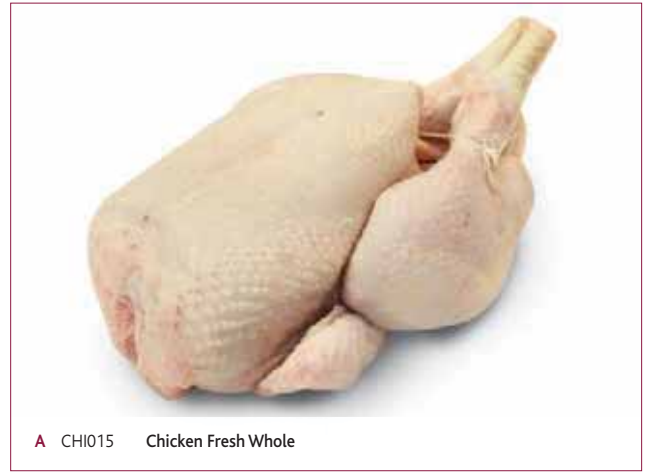
G PRC020 Pork Loin Chops Bandsaw (Frozen)

BUTCHERY

CHICKEN

		Case size	Unit	Split
FRESH (CHILLED)				
WHOLE				
A	CHI015	Chicken Fresh Whole	1	Per Kg
FILLETS/SUPREMES				
B	CHI057	Chicken Fillets Fresh 6/7oz 170-200g	2	5kg ✓
	CHI076	Chicken Fillets Fresh 7/8oz 200-227g	2	5kg ✓
	CHI067	Chicken Fillets 5x6/7oz (Skin Off) 170-200g	1	Pack
	CHI068	Chicken Fillets 5x7/8oz (Skin Off) 200-227g	1	Pack
	CHI056	Chicken Fillets 7/9oz 200-255g	1	Per Kg
	CHI072	Chicken Fillet 6/7oz (Skin on) UK 170-200g	1	Pack
	CHI009	Chicken Fillet 5x7/8oz (Skin on) UK 200-227g	1	Pack
	CHI070	Chicken Supremes 5x6/7oz (Skin On) 170-200g	1	Pack
	CHI071	Chicken Supremes 5x7/8oz (Skin On) 200-227g	1	Pack
	CHI074	Chicken Supremes 5x9/10oz (Skin On) 253-283g	1	Pack
DICED				
	CHI075	Chicken Breast Diced (UK) Chilled	2	5kg ✓
C	CHI062	Chicken Breast Diced Chilled	1	Per Kg
	CHI060	Chicken/Turkey Diced 50/50	1	Per Kg
	CHI064	Chicken Minced Breast	1	Per Kg
OTHER				
	CHI049	Inner Chicken Fillets	1	Per Kg
	CHI066	Chicken Legs loose Fresh	 1	Per Kg
	CHI073	Chicken Wings 3 Joint Loose Fresh	 1	Per Kg
	CHI063	Chicken Fronts Chilled	 1	Per Kg
	CHI077	Chicken Portions Mixed UK Chilled	1	Per Kg
	CHI078	Chicken Breast Strips Fresh	1	Per Kg

		Case size	Unit	Split
FROZEN				
WHOLE				
	CHK006	Chickens 1.2kg	1	Each
	CHK010	Chickens 1.6kg	1	Each
	CHK018	Chickens 2kg	1	Each
	CHK004	Chickens (Weighted Code) Frozen	1	Each
	CHK020	Chickens 2.7kg	1	Each
	CHK022	Chickens 3kg	1	Each
	CHK050	Chicken Supremes Corn Fed Frozen (Weighted)	1	Each
	CHK110	Chickens Whole Corn Fed Frozen	 1	Each
	CHK001	Chicken Supremes Corn Fed 8oz/227g	 1	Each
	CHK032	Poussins	 1	Each
OTHER				
	CHK073	Chicken Wings Frozen	1	Per Kg
	CHK075	Chicken Thighs Frozen	1	Per Kg
D	CHK060	Chicken Leg Portions Frozen	1	Per Kg
	CHK063	Chicken Portions Mixed Frozen	1	Per Kg
	CHK015	Chicken Thighs IQF	8	1.5kg ✓
	CHK025	Chicken Carcase	1	Per Kg
	CHK059	Chicken Drumsticks IQF	8	1.5kg ✓



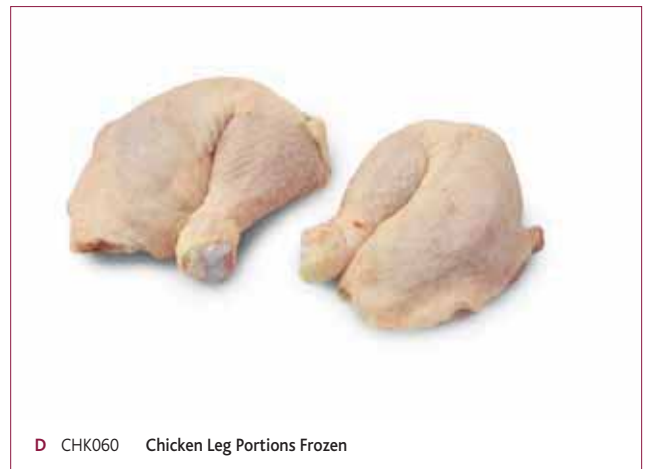
A CHI015 Chicken Fresh Whole



B CHI057 Chicken Fillets Fresh 6/7oz



C CHI062 Chicken Breast Diced Chilled



D CHK060 Chicken Leg Portions Frozen

BUTCHERY

TURKEY

FRESH & FROZEN

WHOLE

		Case size	Unit	Split
TUR006	Turkey Butterfly (Boneless) Fresh (Imported)	1	Per Kg	
TUR021	Fresh Oven Ready Turkey	SOO	1	Per Kg

PORTIONS / DICED / MINCED

A	TUR004	Turkey Breast Diced Fresh	1	Per Kg	
B	TUR008	Turkey Breast Steaks	1	Per Kg	
	TUR010	Turkey Breast Strips	1	Per Kg	
	TUR014	Turkey Thigh Meat Diced	1	Per Kg	
	TUR016	Turkey Meat Minced	1	Per Kg	
C	TUR012	Turkey Thigh Meat Whole (Boneless) Fresh	1	Per Kg	
	TUR020	Turkey Diced 50:50 (Breast & Thigh)	1	Per Kg	
	TUR085	Turkey Escalopes 6/7oz 170/200g	1	Each	
	TUR086	Turkey Escalopes 7/8oz 200/227g	1	Each	
	TUR028	Turkey Royale 66% Breast 33% Thigh	SOO	1	Per Kg

TURKEY - FROZEN

	TUF006	Turkey Butterfly Frozen (Imported)	1	Per Kg	
	TUR009	Half Turkey Butterfly Single Lobe	1	Per Kg	
	TUR043	Turkey Crown on the bone	SOO	1	Per Kg
	TUR022	Turkey Dry Frozen	SOO	1	Per Kg



A TUR004 Turkey Breast Diced Fresh



B TUR008 Turkey Breast Steaks



C TUR012 Turkey Thigh Meat Whole (Boneless) Fresh

DUCK/GEESE

		Case size	Unit	Split	
D	DUC021	Whole Duck Free Range	SOO	1	Per Kg
	DUC024	Duck Breast Fillet 170-227g 6-8oz	1	Per Kg	
	DUC025	Duck Breast Fillet 227-283g 8-10oz	1	Per Kg	
E	DUC022	Duck Oyster Leg Bulk	SOO	1	Per Kg
	DUC006	Ducks 2.4kg	1	Each	
	DUC010	Ducks 2.2kg Aprox.	1	Each	
	DUC029	Aromatic Duck	SOO	6	Per Kg
	DUC001	Duck Legs Oyster Cut 250-340g (2 Pack)	1	Per Kg	




D DUC021 Whole Duck



E DUC022 Duck Oyster Leg Bulk

BUTCHERY

BACON & GAMMON

		Case size	Unit	Split
BACON FROM OUR BUTCHERS				
A	BAC160 Bacon Back Chops (Rindless)	1	Per Kg	
	BAC156 Bacon Back Whole (Rindless)	1	Per Kg	
GAMMON HORSESHOE				
	BAC130 Gammon Horseshoe (Whole)	1	Per Kg	
	BAC232 D-Cut Horseshoe Gammon Steak 5 x 10oz/283g	1	Pack	
	BAC207 Horseshoe Gammon Steaks 5x4oz/113g	1	Pack	
B	BAC208 Horseshoe Gammon Steaks 5x8oz/227g	1	Pack	
	BAC209 Horseshoe Gammon Steaks 5x12oz/340g	1	Pack	
	BAC210 Horseshoe Gammon Steaks 5x10oz/283g	1	Pack	
	BAC132 Gammon Horseshoe Steaks (Whole Slice)	1	Per Kg	
	BAC133 Gammon Horseshoe Steaks (Cut In Half)	1	Per Kg	
	BAC100 Gammon Horseshoe Smoked (Boneless)	1	Per Kg	
	BAC230 D-Cut Gammon Steaks 5x8oz/227gm	1	Pack	
GAMMON				
	BAC102 Gammon Whole Rind On (Boneless)	1	Per Kg	
C	BAC106 Gammon Joints Rind On (Boneless)	1	Per Kg	
	BAC134 Gammon Corner Joints Netted (Rind On)	1	Per Kg	
	BAC172 Gammon Trims	1	Per Kg	
	BAC135 Slipper Gammon Joint	 1	Per Kg	
	BAC174 Gammon Shanks 1x5	2	Pack	✓



A BAC160 Bacon Back Chops (Rindless)



B BAC208 Horseshoe Gammon Steaks 5x8oz/227g



C BAC106 Gammon Joints Rind On (Boneless)

BUTCHERY

OFFAL & SPECIALIST MEATS

		Case size	Unit	Split
OFFAL				
	OFF028	Calf Livers (Frozen)	1	Per Kg
A	OFF026	Chicken Livers (Frozen)	1	Per Kg
B	OFF022	Lamb Kidney (Frozen)	1	Per Kg
	OFF020	Lamb Liver (Frozen)	1	Per Kg
	OFC022	Lamb Liver Sliced	1	Per Kg
	OFF002	Ox Liver (Frozen)	1	Per Kg
	OFF006	Ox Tail (Frozen)	1	Per Kg
	OFC018	Pig Kidney Diced	1	Per Kg
	OFF016	Pig Kidney (Frozen)	1	Per Kg
	OFF012	Pig Liver (Frozen)	1	Per Kg
	OFC016	Pig Liver Sliced	1	Per Kg
	OFF030	Ox Liver Sliced Frozen	1	Per Kg
GAME				
	MSP008	Whole Rabbit (Frozen)	1	Per Kg
	GAM018	Game Mix (Boneless)	1	Per Kg
	GAM016	Guinea Fowl Supremes (Frozen)	1	Per Kg
	GAM014	Guinea Fowl Whole (Frozen)	1	Per Kg
	GAM010	Partridge	1	Each
C	GAM006	Pheasants Whole English (Game Shot) Pack of 2	1	Each
	GAM008	Pheasants Breast Fillets Pack of 2	1	Each
D	GAM013	Whole Pigeon	1	Each
	GAM012	Pigeon Breasts 10 Pack	1	Each
	GAM015	Goose Whole Frozen	1	Per Kg
	GAM050	Venison Loin/Saddle Boneless	1	Per Kg
MORE EXOTIC				
	MSP018	Crocodile Fillets (Boneless)	1	Per Kg
	MSP016	Kangaroo Rump Steaks	1	Per Kg
	MSP012	Wild Boar Steaks 8oz 227g	2	Each
	GAM036	Venison Diced	1	Per Kg
	GAM038	Venison Steaks 2 x 227g	1	Pack
	GAM042	Veal Cushion whole topside	1	Per Kg
	GAM034	Venison Sausage	1	340g
	ISP0060	Haggis Natural	1	Per Kg
	GOA001	Diced Goat (Bone in)	1	Per Kg
	MSP002	Haggis Log - Haggis Natural	1	Per Kg
	MSP014	Ostrich Steak	1	Per Kg
	GAM060	Quail	1	Per kg
	GAM044	Veal Loin (Bone in)	1	Per Kg
	GAM030	Venison Haunch (Boneless)	1	Per Kg
	GAM032	Venison Haunch (Bone in)	1	Per Kg
	GAM028	Venison Loin (Bone in)	1	Per Kg



A OFF026 Chicken Livers (Frozen)



B OFF022 Lamb Kidney (Frozen)



C GAM006 Pheasants Whole English (Game Shot)



D GAM013 Whole Pigeon

BUTCHERY

MIXED GRILL

	Case size	Unit	Split
A PACK 1	MGR111 UK / EU / NZ Frozen	(approx) 534gm	Each
<ul style="list-style-type: none"> • 1 x 4oz Rump Steak • 1 x 4oz Gammon Steak • 1 x 4oz Pork Loin Steak • 1 x 1oz Lambs Liver • 2 x 2oz Lamb Chop • 1 x 2oz Sausage 			
B PACK 2	MGR015 UK / EU Fresh	(approx) 350gm	Each
<ul style="list-style-type: none"> • 1 x 4oz Rump Steak • 1 x 4oz Pork Loin Steak • 1 x 4oz Gammon Steak 			
C PACK 3	MGR112 UK / EU / NZ Frozen	(approx) 345gm	Each
<ul style="list-style-type: none"> • 1 x 2oz Lamb Chop • 1 x 4oz Rump Steak • 1 x 4oz Gammon Steak • 1 x Cumberland Sausage 			
D PACK 4	MGR113 UK / EU / NZ Frozen	(approx) 345gm	Each
<ul style="list-style-type: none"> • 1 x 2oz Lamb Chop • 1 x 4oz Rump Steak • 1 x 4oz Gammon Steak • 1 x 2oz Lamb Liver 			



A MGR111 Pack 1



B MGR015 Pack 2



C MGR112 Pack 3



D MGR113 Pack 4